

KEY

- REPORTS FIRE FIGHTING EQUIPMENT
- REPORTS BURGLARIES/EMERGENCY LIGHT SIGNAL
- REPORTS FIRE ALARM SYSTEM
- REPORTS TO BUILDING FIRE ALARM CONTROLS

NOTES

STANDARDS TO BE ACHIEVED IN RESPECT OF THE SAFETY MATTERS
DOORS AND PARTITIONS CONTAINED TO THE FIRE SAFETY MATTERS
FIRE SAFETY MATTERS SHOULD BE REFERRED TO THE CONTRACTOR TO
BE ACHIEVED IN RESPECT OF THE SAFETY MATTERS
STANDARDS TO BE ACHIEVED IN RESPECT OF THE SAFETY MATTERS
STANDARDS TO BE ACHIEVED IN RESPECT OF THE SAFETY MATTERS

- UNPANELLED GLASS PARTITIONS SHOULD BE ENTRY AS A MINIMUM
- UNPANELLED GLASS PARTITIONS SHOULD BE ENTRY AS A MINIMUM
- UNPANELLED GLASS PARTITIONS SHOULD BE ENTRY AS A MINIMUM
- UNPANELLED GLASS PARTITIONS SHOULD BE ENTRY AS A MINIMUM
- UNPANELLED GLASS PARTITIONS SHOULD BE ENTRY AS A MINIMUM

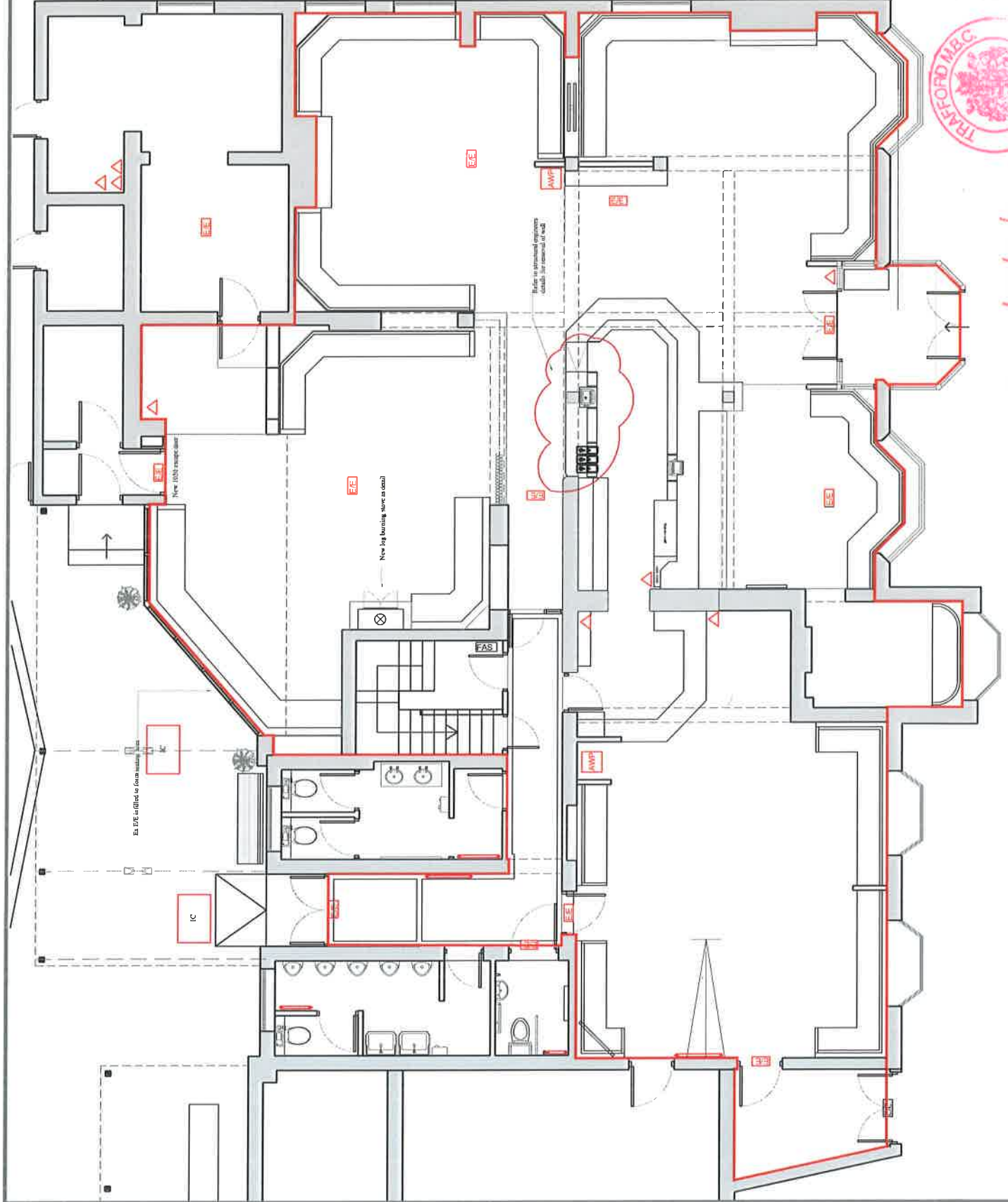
UNPANELLED GLASS PARTITIONS SHOULD BE ENTRY AS A MINIMUM
UNPANELLED GLASS PARTITIONS SHOULD BE ENTRY AS A MINIMUM
UNPANELLED GLASS PARTITIONS SHOULD BE ENTRY AS A MINIMUM
UNPANELLED GLASS PARTITIONS SHOULD BE ENTRY AS A MINIMUM
UNPANELLED GLASS PARTITIONS SHOULD BE ENTRY AS A MINIMUM
UNPANELLED GLASS PARTITIONS SHOULD BE ENTRY AS A MINIMUM
UNPANELLED GLASS PARTITIONS SHOULD BE ENTRY AS A MINIMUM
UNPANELLED GLASS PARTITIONS SHOULD BE ENTRY AS A MINIMUM
UNPANELLED GLASS PARTITIONS SHOULD BE ENTRY AS A MINIMUM
UNPANELLED GLASS PARTITIONS SHOULD BE ENTRY AS A MINIMUM

UNPANELLED GLASS PARTITIONS SHOULD BE ENTRY AS A MINIMUM
UNPANELLED GLASS PARTITIONS SHOULD BE ENTRY AS A MINIMUM
UNPANELLED GLASS PARTITIONS SHOULD BE ENTRY AS A MINIMUM
UNPANELLED GLASS PARTITIONS SHOULD BE ENTRY AS A MINIMUM
UNPANELLED GLASS PARTITIONS SHOULD BE ENTRY AS A MINIMUM
UNPANELLED GLASS PARTITIONS SHOULD BE ENTRY AS A MINIMUM
UNPANELLED GLASS PARTITIONS SHOULD BE ENTRY AS A MINIMUM
UNPANELLED GLASS PARTITIONS SHOULD BE ENTRY AS A MINIMUM
UNPANELLED GLASS PARTITIONS SHOULD BE ENTRY AS A MINIMUM
UNPANELLED GLASS PARTITIONS SHOULD BE ENTRY AS A MINIMUM

lister carter

Bank Farm Buildings, Cleeve Road, Aford, Chester, CH3 5LU
P: +44(0)1244 689 800 F: +44(0)1244 620 452 info@listercarter.com www.listercarter.com

Project Name: The Quarry Bank
Building Regulations
NO: 100
LC873
17.03.11
150 @ A2
012101
A



PL 0025 / 06 / 04 / 11